

# ***BEEMER ZEITUNG***

A Publication of...

**BMW Motorcycle Club  
Dallas - Fort Worth**



**MARCH 2019**



**CATEGORY 1 PHOTO FOR MARCH**

**JOE KAUTZ IN IRELAND**

**Contributed by: Joe Kautz**

**Membership  
Meeting**

**Tuesday  
March 12  
7:30 PM**

**Spring Creek BBQ  
1509 Airport Freeway  
Bedford, TX  
817-545-0184**

**At Forest Ridge & Airport  
Freeway (Hwy 121)**

**Copyright 2009-2019  
(all rights reserved)**

# Points of Interest this Issue

- **Photos OTM - Category 1 (front cover) and Category 2 (sans m/c - Sometimes) elsewhere within.**
- **Bill Case - A lug-nuts Tale**
- **Vince Breckner - gps "gotchas"**
- **Stephen Slisz - True North**
- **Events - Vince mesmerizes us with all our options**
- **TECH DAY - HAPPENING IN MARCH, MORE HEREAFTER**

## BRATS & TECH!

**Help with your bike project. Meeting the shop & club Tech gurus. Parking lot social. You just can't miss this one!**

We are having a Tech Day to End all Tech Days next Sunday, March 17th. Members and your guests are invited. This will be hosted in the professional shop at Cycle Center/ BMW Motorcycles of Denton, 521 Acme St, Denton, TX, 76205. This event runs from 10 am to 4 pm - drop in's at any time through the day are welcome, but be sure to RSVP if you're coming for lunch.

RSVP for lunch at the Event on the website calendar ([click here](#)) or drop a note to [veehastephen@gmail.com](mailto:veehastephen@gmail.com).

**Don't forget to bring your own tools to work on your project**

**Just Added - We will now be running several Technical workshops starting at 11am and running through the day**

**Here are some of the resources that will be available to you:**

BMW of Denton will have certified BMW technicians available to answer questions. This is in addition to the centuries of experience available from our own mechanical guru's. You will have an unprecedented level of expertise to assist you in your project.

Parts & Accessory personal will be on hand to assist in purchases.

Parts and Accessories will offer a 15% discount on any items needed for service or that you would like to purchase on tech day. Or you can download and use the order form below to pre-order any parts or liquids and they will be available at the shop waiting for you on Tech Day. If you pre-ordered parts for the original March 03 Tech Day, your parts can be picked up at the shop or they will be held and available at the shop for the March 17 Tech Day.

The Sales team will have BMW Sales Associates available to answer any Sales questions.

The Service dept. will have Service Advisors to check bikes in for any service you need performed that you don't care to do yourself. Any bike checked in during the tech day will receive 15% off parts and accessories as well as LABOR!

Technical workshops will be run throughout the day. These will cover a gamut of topics like Helmet Quality differences, Fluid Maintenance, New Bike technology, repair tips, Battery technology, and others. We'll have both the Cycle Center's professionals and our own club experts available at the workshops.

Weather forecast looks great, but this will be a rain or shine event in any case. Be sure to get this on your calendar and stop by, even if you're not planning on working on your bike.

We'll see you there! Vince

## CATEGORY 2 - PHOTO FOR MARCH



### RESPIRE on the Mid Atlantic BDR

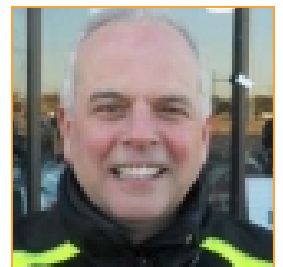
by Joel Watson

---

### Just another kick in the lug-nuts!

by Bill Case

This is a story about a guy named Bill, a poor mountaineer that barely kept his family fed (not). One day, while he was out for a ride on his motor-bike, up thru a curve came a bubbling cure. A cure you say? A pure Texas Cure!



To avoid the content police, this is a story about motorcycles – sort of. It's more about the group of guys in our club that ride them and the hearts beating in their chests. Most of us joined for

*(Continued on page 4)*

friendship, fellowship, conversation and even sustenance, of sorts. And there is always the possibility we could learn something, if we're lucky. You guys cover the waterfront with solutions from lug-nuts to critical care for our two-wheel piles-of-parts that regularly put smiles on our faces!

Some of you may know, my ongoing pain and associated inability to lift my leg to pee or mount a GSA, is severe osteoarthritis requiring a full hip replacement. I thought only old people on TV commercials had this! Well, I am one of those old people. Another identity crisis at my age? REALLY!

My most common form of communication is bitching and complaining, spreading it wide and generously to all of you. You guys have an uncanny ability to sort through it, find the usable parts and somehow find a fix. During one of my rants, **Howard Lund** screamed out: "you are too young to die!" Oh, wait a minute, when an ER doc screams out something about dying I'll stop bitching long enough to ask "come again?" And he said: "you are too young to get a hip replacement." I like the young part, don't like the hip replacement part and thank God he dropped the dying part. Oh, maybe he didn't say dying at all. Although, I was dying choking on my BBQ sandwich!



Prior to this conversation with Howard, I was in a tailspin with hip research, stem cells, trial and error medical decision making. You guys know how we do it. If the part doesn't fit, keep hitting it with a hammer until it does. Ouch! BTW: Medicare makes it a little too easy to consume healthcare. Once I was diagnosed, the path was quickly laid out to replace the part and get me back on the road. Wait a minute! I wanted to know about the procedure, recovery times, error rates, OEM parts, warranty, expected mileage... I needed performance specs people! I get more love from a BMW tech for crying out loud!

Howard pointed me to a surgeon in Fort Worth. An unbelievable surgeon to be exact that checked all of the boxes and then some! He trained with a top surgeon in Chicago that one of our guys used for a hip replacement. Another box checked!

**NOW...**

The big **Texas Cure** is scheduled for March 21 with a 4-6 week break-in period. I will probably use my new hip like I stole it just like when I get a new bike! I want all of you, and especially Howard, to know that I couldn't have done this without you! Also, a big shout out to special counsel Randy McClanahan that jumped into the hip replacement water ahead of me. If anything goes wrong, I will engage him to litigate the outcome.

*My relationship with this club is more than about shiny machines that put smiles on our faces. It's about caring for one another. My sense is, we are all about fixing the things that can be fixed, praying for the things that can't be and throwing the rest away. May we continue to put heart in all our miles!*



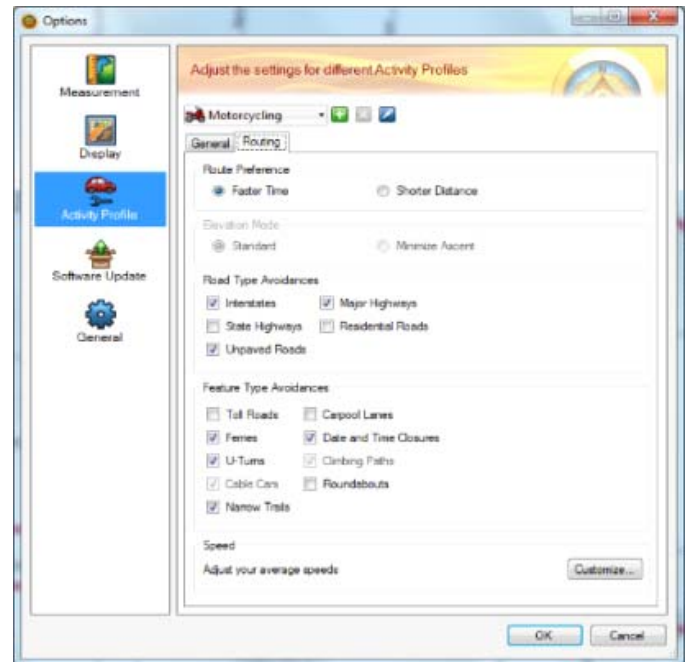
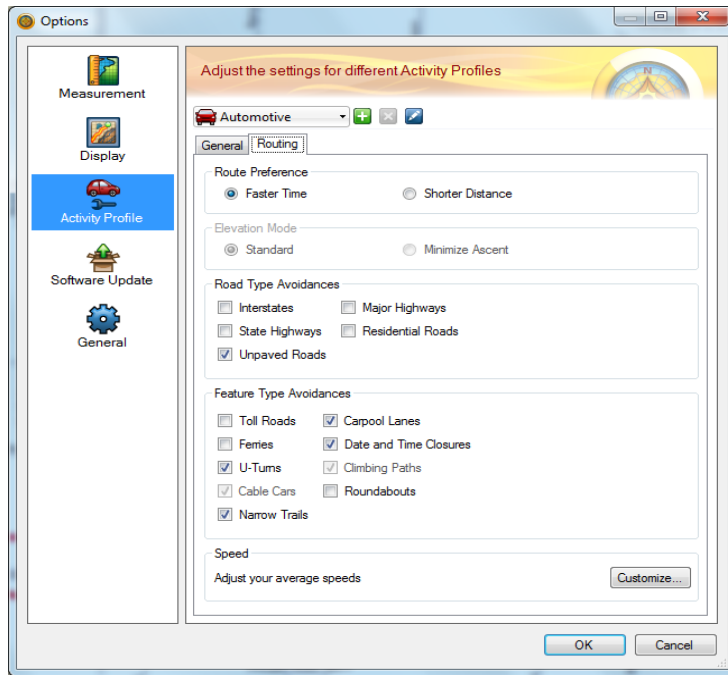
## Is Your GPS Out to Get You?

Yes, it is. There are definitely some “Gotcha’s” inherent in Garmin’s Base-Camp. These are really good to be aware of when building, downloading, and using a route. Here are a few of my “darn, got me again” gotcha’s that I seem to re-learn frequently.

### Where the hell is this \*&^\* GPS taking me?



VINCE BRECKNER



First and foremost is using the Motorcycling activity profile instead of the Driving activity profile.

The Motorcycling profile has several road avoidances checked as a default, most notably that your routes should avoid interstates and highways. That means that it will route you down every side street to avoid a highway and interstate when you’re going through Ft. Worth, for instance.

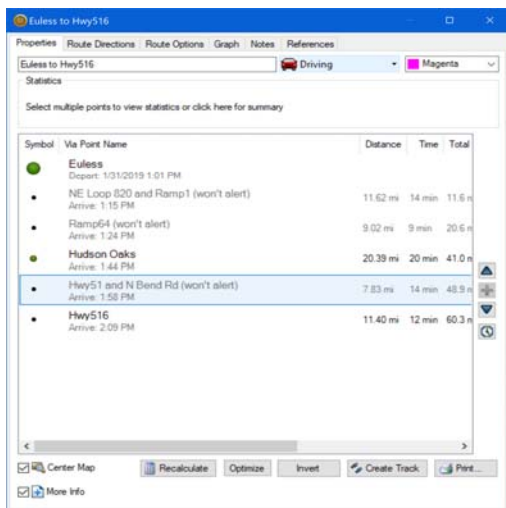
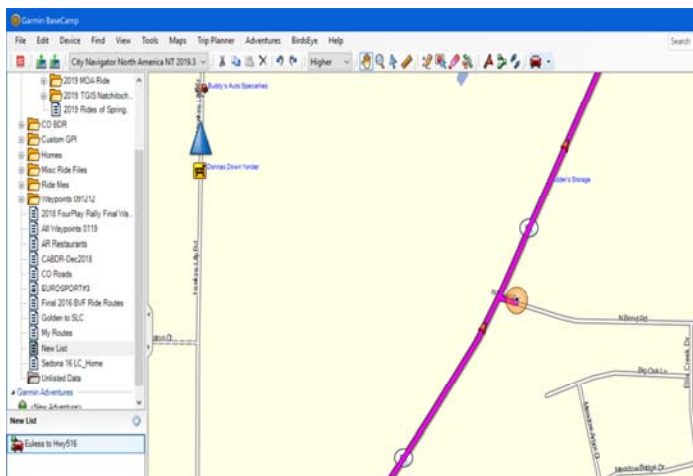
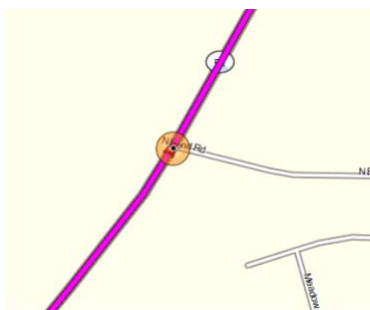
You can change that for a particular route or even for the overall Motorcycling profile. But where that particular Gotcha’ will resurface is when you send the route out to your friends. Anyone downloading it that hasn’t changed their default to match yours will recalculate the route for their GPS using their defaults. Downtown streets of Ft. Worth here we come!

The best way around that particular Gotcha’ is **just to use the Driving activity Profile**. And always recalculate any route you download to be sure you’re maps and defaults used by the creator and goes as intended.

### **I’m going down the highway or road and all of a sudden, the GPS says turn or exit when I shouldn’t**

This one is probably my most common Gotcha’s. It usually results from a shaping point or via point that I’ve added that is just off the highway or road. It looks something like this when you zoom in:

*(Continued on page 6)*

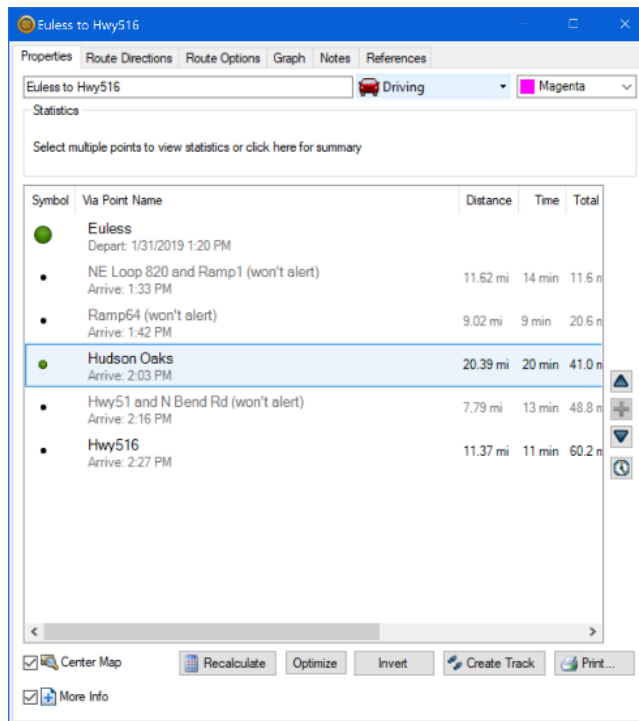


The solution here is to “run” the list of waypoints, via points, and shaping points in your route. You can quickly do this by bringing up the route information screen (double click on the route name or route), be sure “Center Map” is checked (lower left). Then go down the list, select each point and make sure that the point is on the road where you want it. If it isn’t, then move it onto the road and continue down the list. After finishing that, do a quick recalculate to make sure all your changes are included.

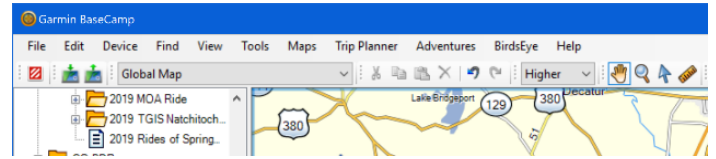
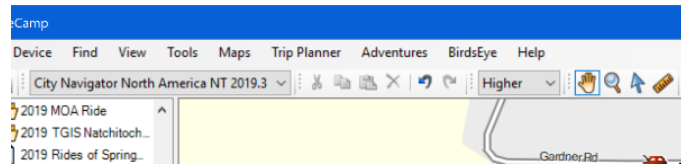
## GPS keeps trying to take me back to some point on the route

There’s an important distinction to make between a **Via Point** and a **Shaping Point**. The **GPS will always try to take you back to a bypassed Via Point**. Via Points will also give you three alerts that you are approaching them. That can be annoying if you use a headset. Shaping Points can be bypassed and the route will shift back as you go down the road.

Shaping Points and Via Points are those points that you add when you drag a route over to a nice, curvy road you want to take or a gas stop you want to make. You can elect to have this point alert (Via Point) or not alert (Shaping Point) in the properties of these points. Once again go to the Route Information screen, Shaping Points are greyed out and Via Points are bold. The Shaping Points will also say “won’t alert” next to the Shaping Point. You can change these by highlighting them and right clicking. Select the option to alert or not alert.



## I can't zoom down to street level and the route won't calculate or show on the roads



This is almost always because your Maps are set to use Global Maps rather than a City Navigator mapset. Garmin downloads a Global Map with its free download. To use all the functionality of BaseCamp to build, manipulate and download routes you have to have the more detailed information contained in the City Navigator Maps. You can quickly determine which one you're using by going to the main menu and clicking on Maps. Or, if you've got the map information block loaded in your toolbar, it will show which Maps you're using.

	Pan	H
	Zoom	Z
	Select	S
	Measure	D
	Waypoint	W
	Route	R
	Track	T
	BirdsEye	B
	Move Point	M
	Insert	I
	Erase	E
	Divide	X

## I click on the Waypoint Tool, or the Move Waypoint Tool, and all of a sudden I'm adding points all over the place

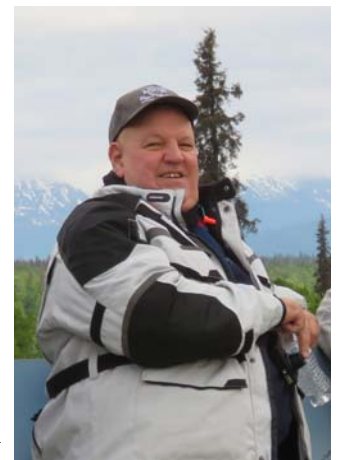
I'm always forgetting to select the Hand tool after I add the odd Waypoint or move a Via/Shaping point. I wind up trying to move around the page and adding a whole bunch of points I have to go back and delete because I didn't move my mouse up and select the Hand tool. I do a whole lot less of that since I started using the keyboard short cut for going back to the Hand tool. The two handiest that I've found are the letter "H" (switches to the Hand Tool) and "Ctrl Z" (erases one step backward). Some of the other keyboard shortcuts may assist you. Try it – it may become habit forming!

*These are the most common Gotcha's that I seem to run into, but I'm sure you've got a few of your own. Don't hesitate to share them. Write them up and send them to Don – he can always use the articles and the rest of will learn something, too.*

## True North

**D**o you use the "Rule-of-Forty" when planning for a motorcycle ride? The rule states that you shouldn't ride if the wind is over 40mph, the temperature is under 40 degrees, and/or there is a greater than a 40% chance of bad weather. There are a couple of more 40's that we might add to that rule.

Chris, Rick, Mike, Tom, Johnny, Leon and I spent a weekend at the YO Ranch hotel in Kerrville TX attending the 2019 Texas Motorcycle Safety Forum. The forum was a "How to Increase Rider Safety" conference hosted by the Texas A&M Transportation Institute and supported by the Texas Transportation Traffic Safety Section along with grants from the National Highway Traffic Safety Administration, and the Texas A&M Transportation Institute, Texas



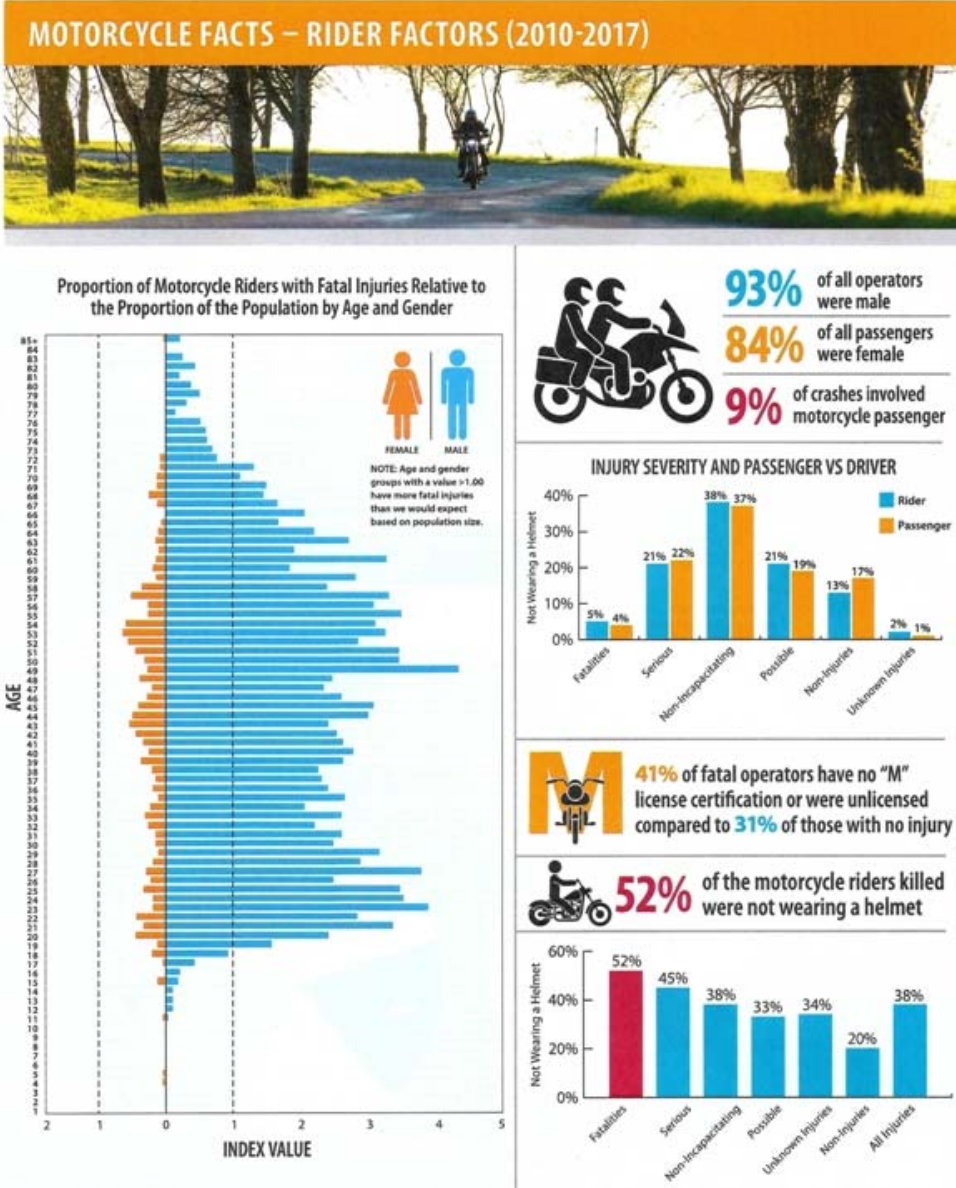
Steve "Yeeha" Slisz

(Continued on page 8)

Center for Transportation Safety, Texas Motorcycle Training Program, the Texas Motorcycle Safety Coalition, and the Look Learn Live Organization as participating agencies.

The full-day conference centered around several speakers in the motorcycle safety field giving a background on their particular agencies, the current safety programs they are involved with and a taste of things to come from those agencies. Motorcycle safety program updates and hints of future motorcycle safety programs were given by the State of Texas Motorcycle Program Manager/TxDot as well as updates from the National Highway Administration and the Federal Highway Motorcycle Advisory Council. There were a couple of short presentations given by Lee Baily, a Bandera County EMS/Wilderness EMS/Stop the Bleed Instructor and Michelle Inzunza, a helicopter critical care fight nurse/paramedic on crash scene management, patient stabilization and safe helmet removal. And even Audrey Menarik, owner of Moto Liberty, gave a talk on the current state of motorcycle safety gear including rider suit airbags.

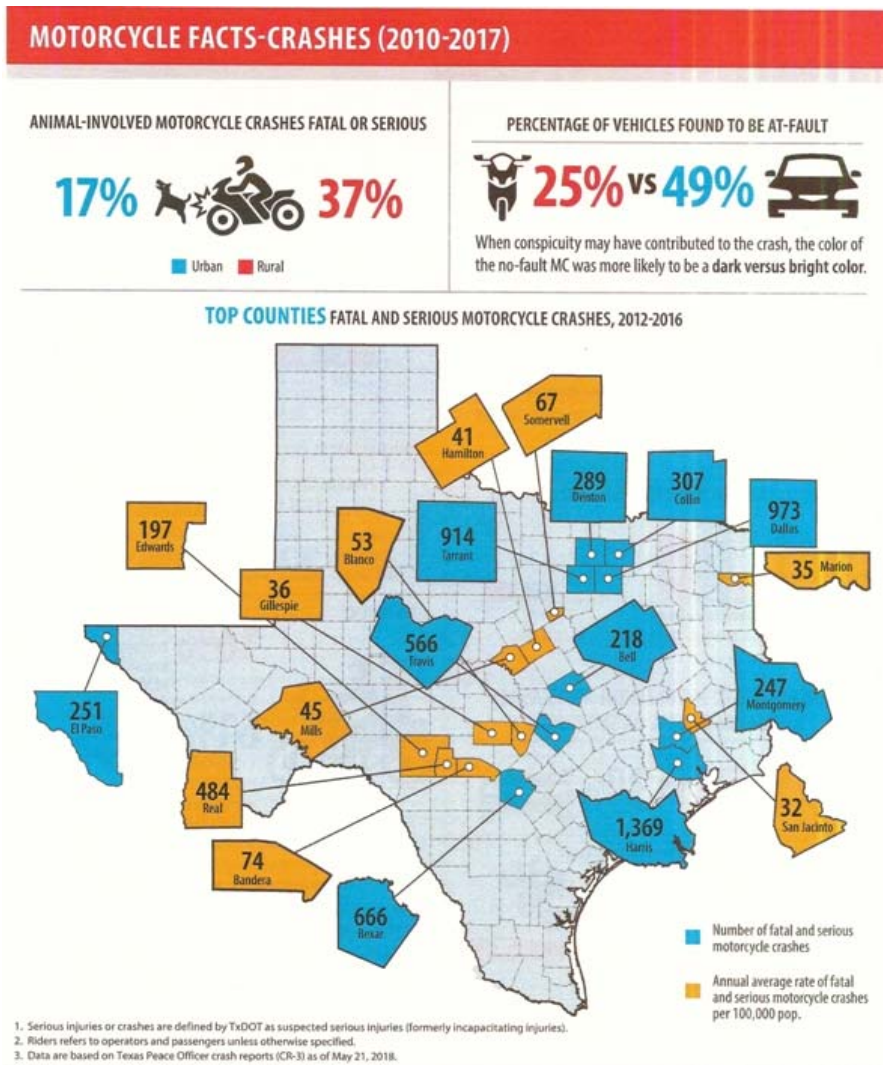
I was highly interested in the “Where Riders Need to Pay Attention” slot presented by Eva Shipp and Amber Trueblood from the Texas A&M Transport Institute that highlighted motorcycle crash statistics involving fatalities and serious injuries. Sobering Texas stats were given for an almost 10 year period. There’s an average of around 600 motorcycle fatality/serious injury accidents per year in Texas. 93% were male operators. 48% of those being single vehicle crashes. 35% were fatal rural road crashes. 41% of the fatal crashes were by unlicensed “M” endorsement operators. 52% of motorcycle riders were fatally not wearing a helmet. They also gave interesting several mix-n-match statistics such as: riders die on curvy roads twice as often as straight roads, and that 39% of those curvy road crashes occurred with DUI operators. An astonishing 68% of all fatalities were from helmetless,



(Continued on page 9)



impaired riders. Then one seemingly encouraging factor was that “only” 14% of fatal crashes involved unsafe speed.



There were a couple of groups in the audience that wanted to argue the statistics or wanted more “us vs them” stats. While the presenters did not have those more detailed numbers, they did hand out a chart showing fatalities relative to age and gender and the “age” peaks on that chart virtually scream out toward stereotypical motorcycle segments. The 20 year old and 50 year old fatalities combined with helmetless/DUI stats tended to a lot of finger pointing. As one program attendee stated: “Harleys vs them ‘Jap’ and crotch-rocket bikes.”

Regardless of which side of the aisle you ride from, the over 40% statistics on Texas fatalities all point to adding a couple of more “Rules-of-40”. Get motorcycle licensed/educated. Wear that helmet. And don’t operate that scooter while under the influence. Because we want to ride ‘em and not die on ‘em!

Stephen Slisz

2019  
BMWDFW  
OFFICERS

President  
Chris Delaplaine  
President@bmwdfw.org

Vice President  
Carter Lewis  
VicePresident@bmwdfw.org

Secretary/Treasurer  
Dennis Bufton  
Bedford, TX  
817-475-2413  
schatzmeister@bmwdfw.org

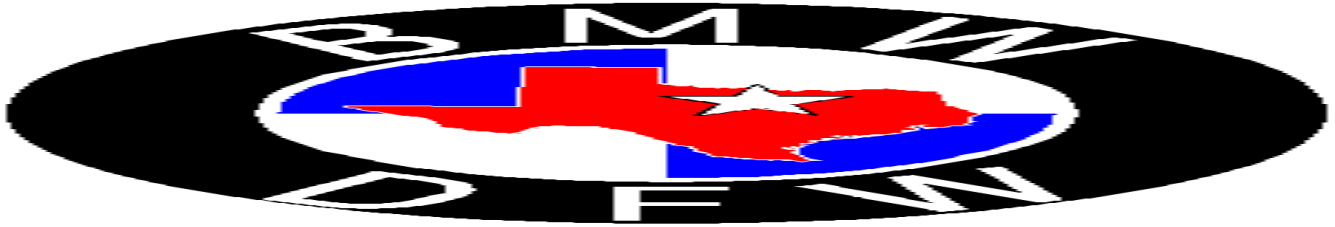
Tourmeister  
Stephen Slisz  
tourmeister@bmwdfw.org

Webmeister  
Margie Kallmayer  
webmeister@bmwdfw.org

Safety Director  
Rick Kallmayer  
safety@bmwdfw.org

Newsletter Editor  
Don M Mills  
newseditor@bmwdfw.org





### ***2019 PREMIER CLUB RIDES***

*All the details for each of the Club Events are available by going to the Event Calendar [Click here](#)*

**April 6-7; Mena, AR. “Roads of Spring”**

**May 10-12, Fri-Sun; Natchitoches, LA. “Thank God It’s Spring” -  
Natchitoches Jazz Festival & Crawfish Fest\*\***

**Sept TBD, Farewell to Summer Tour**

**Oct 24-27, Thu-Sun; Eureka Springs, AR.  
BMWDFW Annual “Fall Color Tour”**

**\*\* No Club Hotel Room Block  
“Ride ‘em - Don’t Hide ‘em”**

**THE WORLD’S MOST INTERESTING MOTORCYCLE  
CLUB**

### **RECURRING CLUB ACTIVITIES DETAIL**

#### **BMWDFW Club Forum**

Our members’ forum is at the BMWDFW Yahoo Group. [Click here to join](#)

#### **CLUB MEETING, 7:30 PM, 2<sup>nd</sup> Tuesday, MONTHLY, except December**

Spring Creek BBQ, 1509 Airport Freeway, Bedford, TX. Located on the westbound access road of Airport Freeway at the corner of Forest Ridge Drive in Bedford. Dinner and social begins 6:30 pm.

#### **CLUB BREAKFAST / RIDE, 2<sup>nd</sup> Sunday, MONTHLY**

AM/10 AM, Mary’s Brazos Café, Tin Top, 15 mi south of Weatherford, Texas. A ride follows, weather permitting.

#### **CLUB BREAKFAST, Saturday, 7:30 AM/8:45 AM**

WEEKLY. Original Pancake House in Grapevine, 1505 William D Tate Avenue, Grapevine, TX 76051, (817) 421-3444.

#### **AD HOC RIDES**

These will be announced as they come up on the Members Forum at Yahoo Groups. [Click here to join](#)

## 2019 UPCOMING CLUB EVENTS

For future and most current updated Event information, go to the Club Event Calendar [Click here](#)



VINCE BRECKNER

### **The Tech Day to End All Tech Days – This is a Rain or Shine Event**

**March 17 @ 10:00 am - 4:00 pm**

Cycle Center/BMW Motorcycles of Denton, 521 Acme St  
Denton, TX 76205 United States

This date is a Rain or Shine Event. Please RSVP to this event if you are going to be with us for Lunch. All RSVP's for the prior date of Mar 03 have been deleted.

Ready to be blown away by the Tech Day to End All Tech Days? The Dream starts here: Cycle Center/ BMW Motorcycles of Denton, 521 Acme St, Denton, TX, 76205 We are talking about a Tech day in the Denton's BMW dealer's professional shop! ...

Find out more [click here](#)

### **Roads of Spring – Mena Ar – April 6**

**April 6 - April 7**

Sun Country Inn, Mena, Ar.

To kick off the Spring of 2019 riding season, let's go ride the Talimena Scenic Byway. A short overnighter on April 6th, 2019, we'll leave DFW and ride the scenic area of Eastern Oklahoma and finish with the Talimena Scenic drive into Mena Ark for the night. Sunday, we head back for home. Sun County Inn - 877-394-7477 (NOTE: Sun County has a 2-week cancellation date for groups. Our block expiration and your room cancellation deadline is March 23rd!!!) <http://www.suncountryinn.com/> We have...

Find out more [Click here](#)

### **Thank God It's Spring Ride – Natchitoches Jazz Festival & Crawfish Festival**

**May 10 @ 7:00 am - May 12 @ 5:00 pm**

2019 TGIS Natchitoches Jazz and Crawfish Festival, 5335 University Parkway  
Natchitoches, LA 71457 United States

This is the revised and current date for the TGIS ride to the Natchitoches Jazz and Crawfish Festival The TGIS ride will be to the Natchitoches Jazz and Crawfish Fest-and leaves the Hurst QT at 7am. The main group will briefly stop to pick up a second group to depart from the Forney Dairy Queen on US80 and 740 at 8:15am. Lunch will be in Nacogdoches at the Clear Springs restaurant. The Friday dinner suggestion is at the Crawfish Hole...

Find out more [click here](#)

*Listed below are select other events that are not club sponsored but may interest our members. These may not be listed on the Club's website calendar.*

## OTHER NOTABLE EVENTS DETAIL

### **Mar 8-17, Fri-Sun; Daytona, FL. Daytona Bike Week**

Enough said! [Click here](#) for more info.

### **Mar 10, Sun; \*\*\* Daylight Saving Time Begins \*\*\***

### **Mar 22-24, Fri-Sun; Beeville, TX. The Texas Mile**

Competitors are coming from all over to achieve their fastest speed in running the Texas Mile. This is both a car and motorcycle event with multiple classes, including street legal. Spectators are allowed in the paddock and there are rules

*(Continued on page 12)*

for both participants and spectators. This event is tagged as "A High Speed Shoot-out and Land Speed Racing Venue that compares to the likes of the Bonneville that beckons one to "Drive in Your World, Race in Ours"! Click here for all the information.

**Mar 29-31, Fri-Sun; Dallas, TX. Rockers vs Mods**

This tribute to the 1960s British rivalry between the Rockers and Mods holds true to the subculture that bore the two clashing trends. But the three-day bike show and music festival has been infused with a very Texas vibe with great music and jackassery of the best kind! If you haven't attended, you should. Click here for all the info.

**Apr 5-7, Fri-Sun; Kerrville, TX. Hill Country Hangout**

Please join us at Kerrville- Schreiner Park in Kerrville, TX April 5 - 7th for a couple of days of beautiful springtime in the Texas Hill Country. The rally site is on the hill side of the park. The rally camping will be in the Fawn hide-a-way loop, dining hall and mini cabins in the Midway Mini-cabin loop. The GPS coordinates for the entrance at State Park Rd 19 and FM 173 are 30.011739, -99.122925. Note that this is NOT the same as the entrance to the river side of the park which is on the opposite side of FM 173. Entrance to the rally site opens at noon on April 5<sup>th</sup>. [Click here](#) for all the information and registration.

**Apr 12-14, Fri-Sat; Austin, TX; MotoGP Grand Prix of the America's**

Don't miss the excitement of the 2019 Austin MotoGP Championship! Choose from a variety of seating options and enjoy VIP hospitality in the Paddock Building. Plus, add hotel accommodations and ground transportation to complete your trip! [Click here](#) and [click here](#) for all the information.

**Apr 20, Sat; Rusk, TX. Texas National Picnic**

Join us on Saturday, April 20th, 2019 at noon for the Texas National Picnic, being held at Love's Lookout Park, located on the east side of US Hwy 69 approximately 4 miles north Jacksonville, TX. N32d 01' 46.03 W95d 16' 46.93 We will fire up the grills at noon. There are restrooms, vending machines, covered picnic tables, grills, plenty of parking, and a great view. Bring your own food and drink; we will provide charcoal for the grills. Come join us for lunch and meet some folks from East Texas!

**Apr 20, Sat; Ft. Worth, TX. Lone Star Half-Mile - AMA Flat Track Racing**

The Lone Star Half-Mile AMA Flat Track Racing event will be held at 3545 Lone Star Circle (Texas Motor Speedway). For tickets and more information [click here](#).

[Apr 21, Sun; \\*\\*\\*EASTER SUNDAY\\*\\*\\*](#)

**Apr 26-28, Fri-Sun; Branson, MO. Blitz to Branson**

The 2019 Blitz will be held in the Honeysuckle Inn and Conference Center at 3598 Shepherd of the Hills Expressway, Branson MO 65616. Be sure to make your own reservations. 888-386-3648 or 417-335-2030 and let them know it's for Internet BMW Riders (IBMWR) for the special rate. The Honeysuckle Inn rooms will be all non-smoking and cost \$55 for a double with 2 queen beds, king is \$65. *\*\*\*Please note, they have a two day cancellation policy and if you're arriving later than 9 PM please let them know in advance.\*\*\** The meeting room will be available for checking in, dropping off any door prizes that you want to bring, socializing and the Gathering Sat night at approximately 8 pm. I will be Keeper of the List for this year, so please email me your names and state with 'Branson Blitz' in the Subject line to keep it updated. Karen Mans [neraksr@gmail.com](mailto:neraksr@gmail.com) or (816)590-1759

**Apr 29, Sat; Bryan TX. NIIT WIT takes on the Heart of Texas Rally**

This will be the first year the NIIT WIT crew has taken on the HoT Rally and we hope to do it the justice it deserves for James and Karen Stovall. This is a 12-hour rally with a remote start and a finish in Bryan, Texas. This year's Heart of Texas Rally will be a 12-hour rally focusing on the El Camino Real (Old San Antonio Rd) and the Daughters of the Revolution route markers as the bonus points. All bonuses will be within the state of Texas. Registration is \$100-\$150. [Click here](#) for all the information.



**BMWDFW**